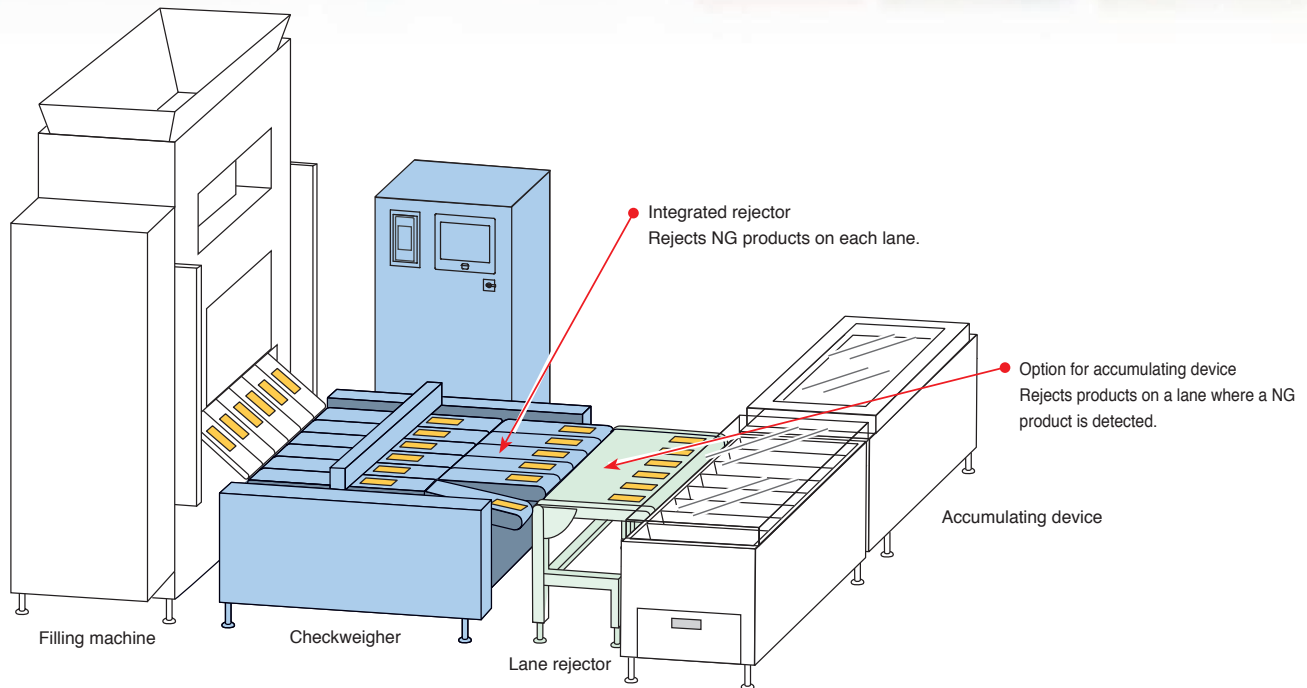


Checkweighers for Multiple Lanes

Can be used for filling packaging lines, which are becoming increasingly inter-connected.

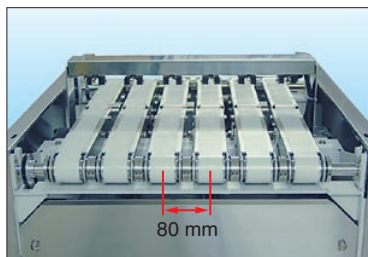
One indication unit allows measurement and rejection of up to 6 lanes. The control/monitoring function of the filling head enhances yield.



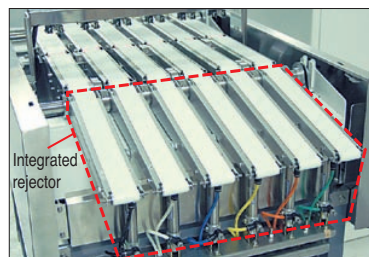
1

Design and space saving tailored to your production lines (for 3 to 6 lanes)

- The minimum belt pitch of 80 mm (when the belt width is 40 mm) eliminates the need for a conveyor used for pitch adjustment with the filling machine.
- Ideal combination can be selected from various conveyor sizes. Three belt sizes of 40 mm, 70 mm, and 100 mm are available.

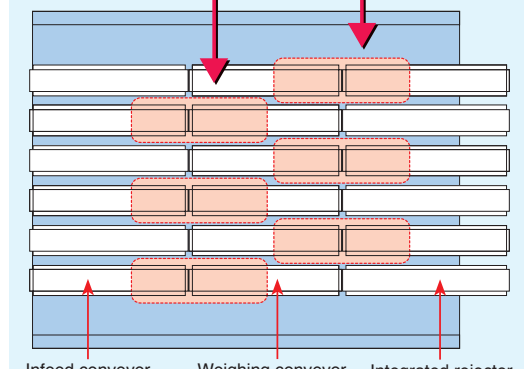


Space saving



Integrated rejector

By placing high-rigidity weighcells alternately on both sides of the weighing conveyor, space saving and high accuracy have been achieved.



Offset support structure

2 Accurate high-speed/high-precision measurement (Maximum accuracy: 15 mg)

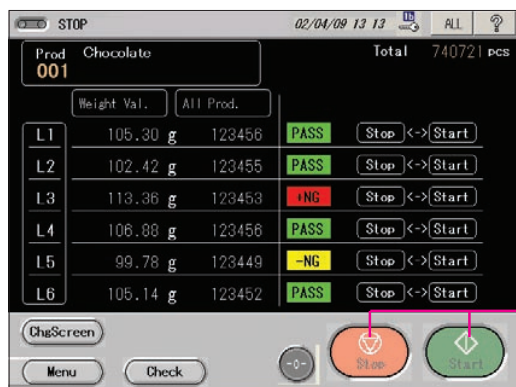
- 1.5 times faster response speed and 2 times higher accuracy than conventional models with the high-rigidity electromagnetic balancing weighcell and our unique DROP ^{Note} filter (in-house comparison).

Note) DROP (Dynamic Responsiveness Optimization Process)

- Thanks to multiple CPUs, the speed of 900 products/min has been achieved (in all the lanes).
(Example 6-lane system: 150 products/min per lane, 2-lane system: 450 products/min per lane)

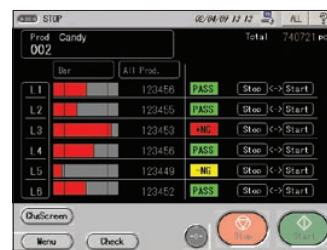
3 Batch control/monitoring up to 6 lanes with just one indicator

- The color LC touch panel allows batch control, monitoring, and statistics management of 2 to 6 lanes (with independent control of each lane).
- Parameters of each lane can be set in batch.
- The measurement result display can be switched between the weight value display and the weight bar display for superior viewability.
- Three operation levels, 2 operator levels and 1 administrator level, allow operation according to the level of the operator.



Basic screen (6-lane)

Screen switching easily possible.



Basic bar screen (6-lane)



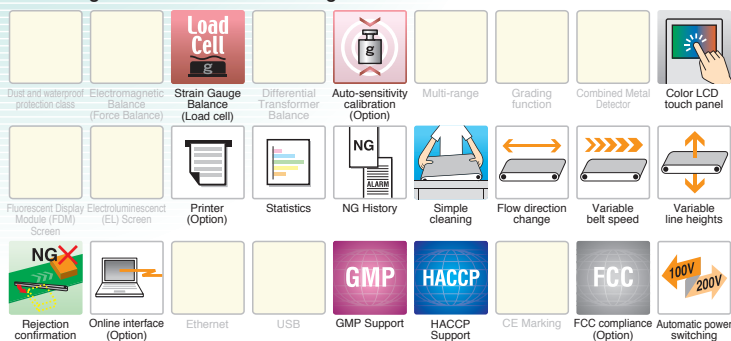
Counter screen

Start / Stop

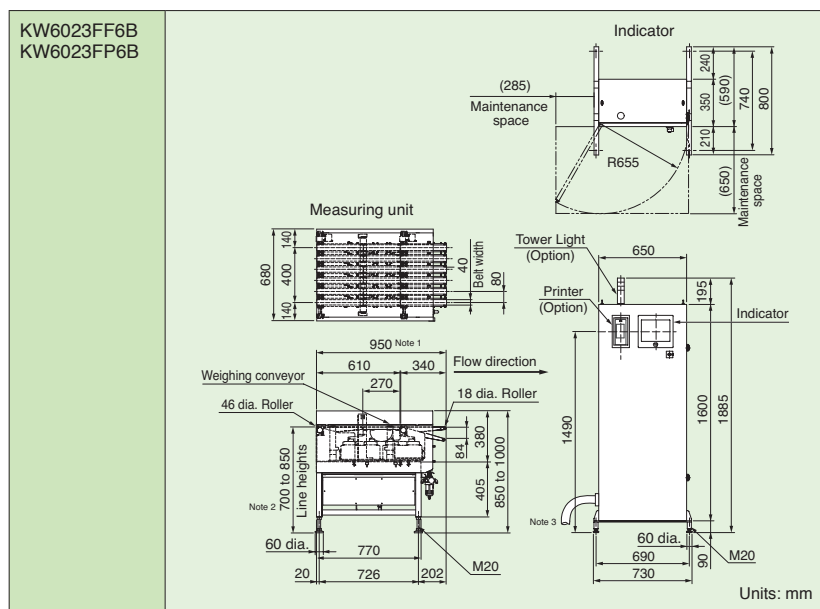
For Multiple Lanes

KW6023F type

Suitable for lines where multiple lanes of products are inspected with just one unit such as divided filling packaging and tube filling lines. The space-saving checkweigher allows weighing control of up to 6 lanes with just one indicator. The large, color, LCD touch panel allows centralized control of production records for multiple lanes. An ideal measuring unit can be selected from our wide range of SV-series checkweighers.



External Dimensions



Note 1 : Separately placed exclusive rejector has the same machine length.
 Note 2 : The line height can be adjusted to your request. Note that the minimum line height is 400±20 mm.
 Note 3 : The standard cable length between the indicator and the measuring unit is 5 m. Optional 10 m cable is also available.

Specifications

| | | | |
|---|--|--------------------------|--------------------------|
| Model | KW6023FF6A KW6023FP6A | KW6023FF6B KW6023FP6B | KW6023FF6C KW6023FP6C |
| Weighing range | 0.5 to 60 g | | |
| Maximum accuracy (3σ) ^{Note 1} | ±0.015 g | | |
| Maximum speed ^{Note 1} | 150 products/min × 6-lane | | |
| Display | 10.4-inch color TFT LCD | | |
| Operation method | Touch panel | | |
| Indication range | 60.45 g | | |
| Scale interval | 0.005 g | | |
| Preset memory | Maximum 100 | | |
| Classification | 2 | | |
| Product size ^{Note 2} | Width W | 20 to 40 mm | |
| | Length L | 46 to 230 mm | |
| | Height H | 5 to 60 mm | |
| Belt speed | 15 to 60 m/min | | |
| Power requirements | 100 to 120 Vac +10% -15% or 200 to 240 Vac +10% -15%, single phase, 50/60 Hz, 600 VA, rush current 62 A (typ.) (20 ms or less) | | |
| Exclusive-use rejector | Self-standing | Integrated | _____ |
| Air requirements | 0.5 to 0.9 MPa, 15 ℓ /min [A.N.R.] (per lane) | | |
| Mass | Measuring unit: 130 kg Indicator: 120 kg | | |
| Environmental conditions | 0° to 40°C (variation not to exceed 5°C/h to maintain accuracy), relative humidity 30% to 85%, non-condensing | | |
| Protection class | IP30 compliance | | |
| Exterior | KW6023FF6□ : painted KW6023FP6□ : stainless steel (SUS304) (excluding some parts) | | |